

# TARAWERA

239m<sup>2</sup> 4 2 2 2

A stunning home that utilises space well. The open plan living, dining and kitchen area make for a great entertaining space, with enough room for all the family to enjoy.

## HOME FEATURES

- Four bedrooms with ensuite and walk-in wardrobe in master bedroom
- Open plan family, dining and living room
- Galley style kitchen with scullery
- Double garage with internal access and laundry

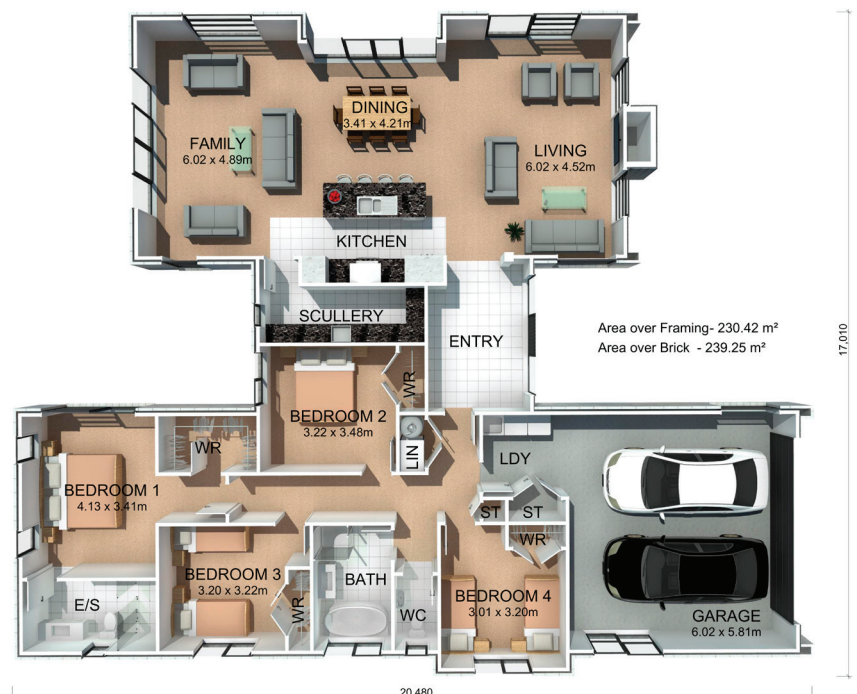
## HOME DIMENSIONS

**Length:** 20.48m

**Width:** 17.01m

**Area over brick:** 239.25m<sup>2</sup>

**Area over framing:** 230.42m<sup>2</sup>



The overall size of the home (m2) is indicative only as the exterior cladding detail selected may alter the final dimensions.