

# WEKA

207m<sup>2</sup>
 4
 2
 2.5
 2

With its generous covered alfresco area, the Weka plan has lovely indoor-outdoor flow and has been designed to provide a separation between living and sleeping spaces and with enough room for all the family to enjoy.

## HOME FEATURES

- Four bedroom with ensuite and walk-in wardrobe in master
- Open-plan family and dining
- Galley-style kitchen with scullery
- Separate living area
- Alfresco off kitchen/family room
- Double garage with internal access and laundry
- 10 year residential build guarantee

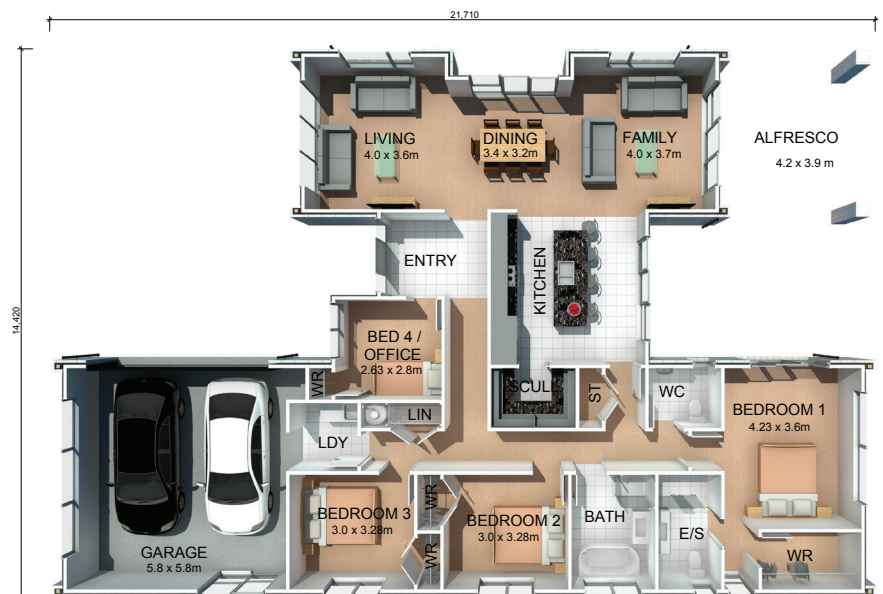
## HOME DIMENSIONS

**Length:** 21.71m

**Width:** 14.42m

**Area over cladding:** 207.84m<sup>2</sup>

**Area over framing:** 201.47m<sup>2</sup>



The overall size of the home (m<sup>2</sup>) is indicative only as the exterior cladding detail selected may alter the final dimensions.