

TOTARA

208m²
 4
 2
 2
 2

Our Totara plan is a beautiful, architecturally designed home that allows you the flexibility of modern living.

HOME FEATURES

- Four bedrooms home
- Open-plan kitchen, family and dining
- Galley style kitchen with appliances and scullery
- Separate formal living area
- Open flow to alfresco dining
- Master bedroom with ensuite and walk-in wardrobe
- Double garage with internal access
- 10 year residential build guarantee



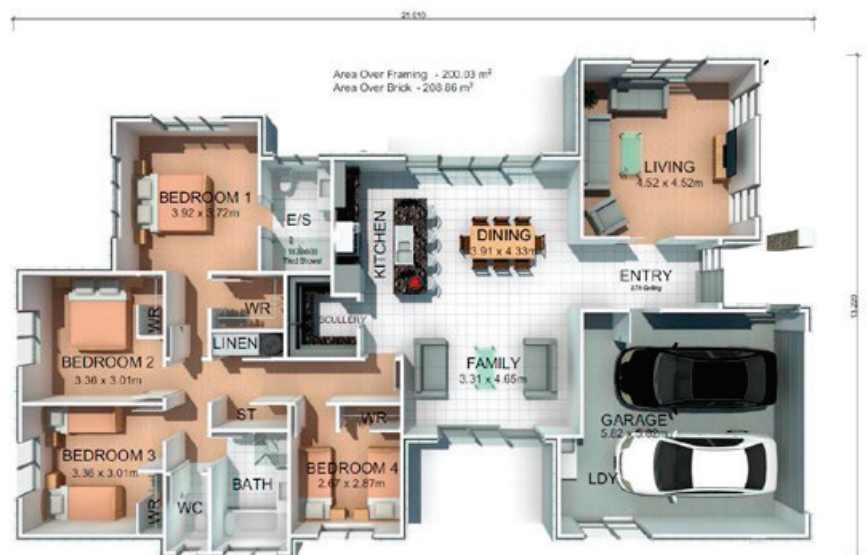
HOME DIMENSIONS

Length: 21.01m

Width: 13.22m

Area over brick: 208.86m²

Area over framing: 200.03m²



The overall size of the home (m²) is indicative only as the exterior cladding detail selected may alter the final dimensions.