

SYCAMORE

 206m²
 4
  2
  2
  2

Designed to capture the sun and the view. The Sycamore plan has lovely indoor-outdoor flow and has been designed to provide a separation between living and sleeping spaces and with enough room for all the family to enjoy.

HOME FEATURES

- Four bedroom with ensuite and walk-in wardrobe in master
- Open-plan family and dining
- Galley-style kitchen with scullery
- Separate living room
- Computer nook
- Alfresco off kitchen/dining
- Double garage with internal access and laundry
- 10 year residential build guarantee

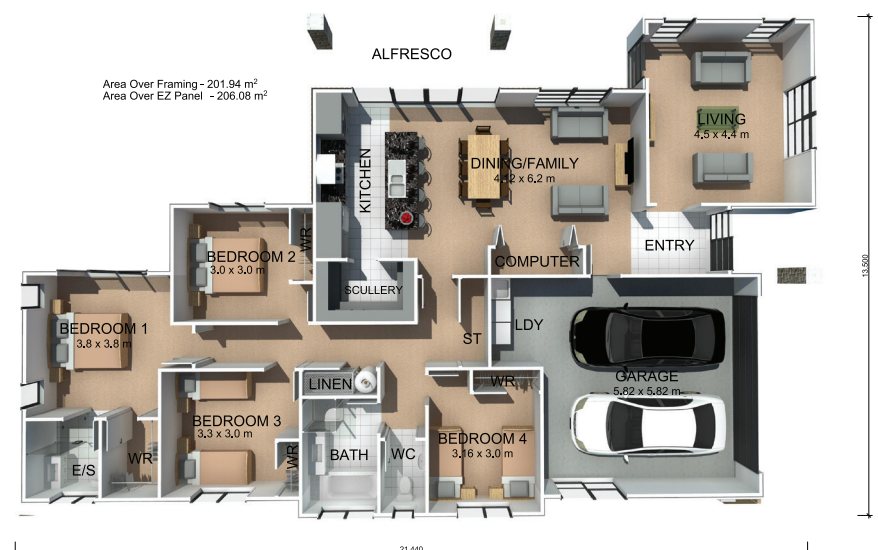
HOME DIMENSIONS

Length: 21.44m

Width: 13.50m

Area over framing: 201.94m²

Area over cladding: 206.08m²



The overall size of the home (m2) is indicative only as the exterior cladding detail selected may alter the final dimensions.