

PIHANGA

 208m²
 2
  2
  4
  2

The Pihanga plan offers a spacious living experience with four double bedrooms, including an ensuite and walk-in wardrobe in the master bedroom. The open plan dining and family areas provide ample space for entertaining, while a separate formal living area adds an elegant touch. Step outside to enjoy the alfresco living area, perfect for outdoor dining. The kitchen features a walk-in pantry, ensuring plenty of storage space, and there is even a small office for those who need a dedicated workspace.



HOME FEATURES

- Four double bedrooms
- Ensuite and walk-in wardrobe to master bedroom
- Open plan dining and family with separate formal living
- Alfresco living area off the back
- Walk in pantry in the kitchen
- Small office
- Double garage with internal access and laundry
- Fixed price contract
- 10 year residential build guarantee

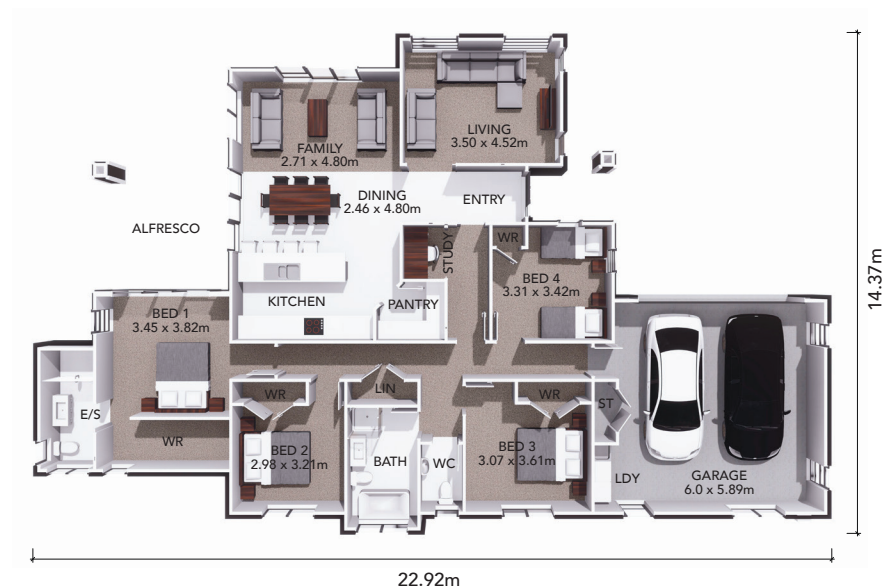
HOME DIMENSIONS

Length: 22.92m

Width: 14.37m

Area over cladding: 208.97m²

Area over framing: 202.38m²



The overall size of the home (m2) is indicative only as the exterior cladding detail selected may alter the final dimensions.