

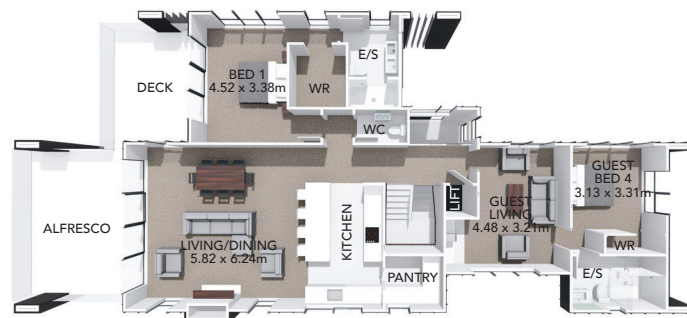
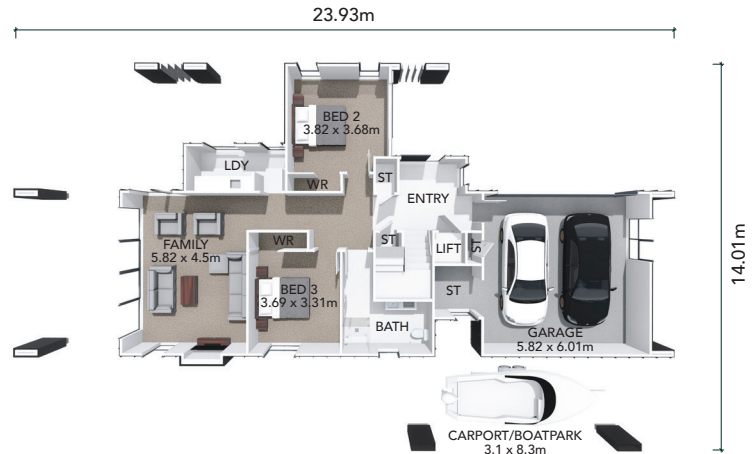
COLORADO

289m²
 3
 2
 4
 3

The two-level contemporary Colorado design is a spacious four bedroom home featuring a separated guest suite with a kitchenette and ensuite. With an internal lift, boat park and a covered outdoor living area with room for your spa pool, this stunning home has space for everyone.

HOME FEATURES

- Two levels
- Four double bedrooms
- Three lounges
- Covered outdoor living (room for a spa pool)
- Designer kitchen with scullery
- Master suite with walk-in wardrobe & ensuite
- Guest suite with kitchenette & ensuite
- Internal lift
- Boatshed
- Double garage
- Internal laundry
- Fixed price contract
- 10 year residential build guarantee



HOME DIMENSIONS

Length: 23.93m

Width: 14.01m

Total area over cladding/framing: 289.59 m²

Ground floor area over cladding/framing: 141.25 m²

First floor area over cladding/framing: 148.34 m²