

DOVER

278m²
 3
 2
 5
 4

The Dover Home and Income plan is the perfect solution for growing families, inter-generational living or Airbnb opportunities. The main dwelling contains three bedrooms and is spread over two levels while the minor two bedroom dwelling is located on the ground floor.

MAIN DWELLING

HOME FEATURES

- Two-level home with three bedrooms and three bathrooms
- Two master bedrooms with ensuites
- Open-plan kitchen, dining and living, separate sitting room upstairs
- Double garage with laundry

DIMENSIONS

Length: 17.65m

Width: 11.98m

Ground floor area over framing: 139.48m²

First floor area over framing: 77.13m²

MINOR DWELLING

HOME FEATURES

- Two bedroom home
- Open-plan kitchen, dining and living
- Full self-contained

DIMENSIONS

Length: 12.01m

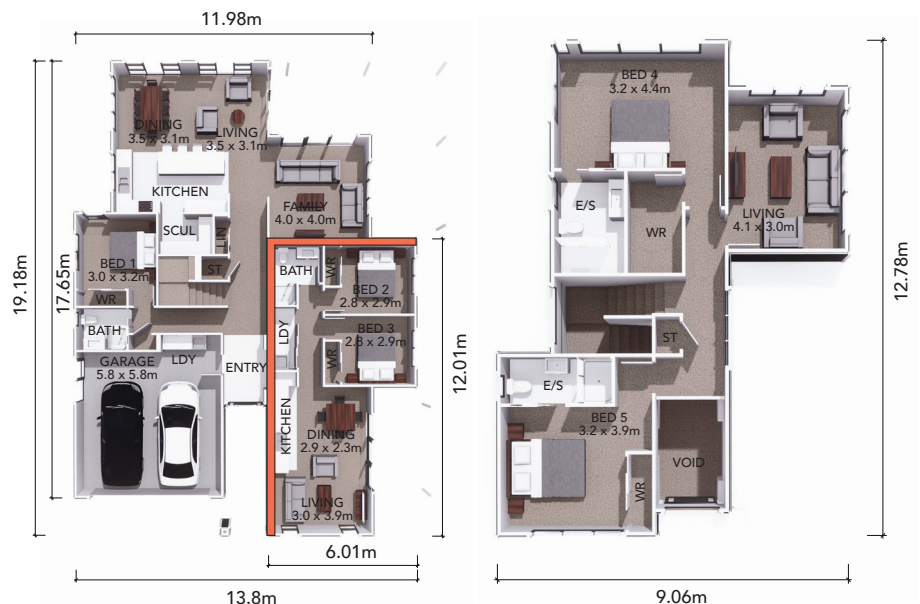
Width: 6.01m

Area over framing: 61.77m²

TOTAL HOUSE DIMENSIONS

Length: 19.1m

Width: 13.8m



The overall size of the home (m²) is indicative only as the exterior cladding detail selected may alter the final dimensions.