

LOCHINVAR

301m²
 3
 2
 5
 3

Introducing the Lochinvar, one of our most spacious and modern family home designs. This expansive five bedroom plan provides ample room for your family to grow and flourish. It features expansive alfresco decks, perfect for hosting gatherings as well as a separate playroom - a haven for your little ones to explore. And for those special occasions, the formal lounge for entertaining guests.



HOME FEATURES

- Spacious five bedroom home
- Master bedroom with ensuite and walk-in wardrobe
- Open-plan kitchen and dining
- Separate formal lounge
- Separate playroom
- Walk-in pantry in kitchen
- Two alfresco areas
- Double garage with internal access
- Fixed price contract
- 10 year residential build guarantee

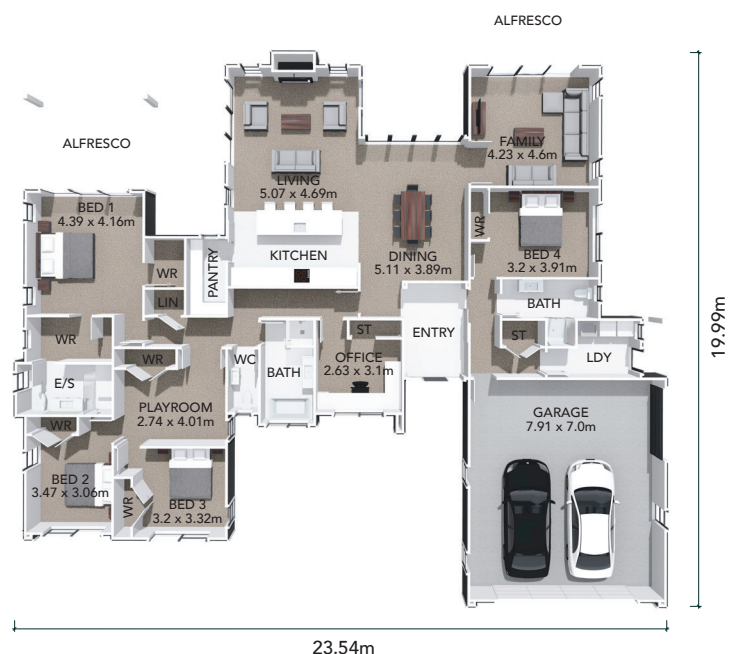
HOME DIMENSIONS

Length: 23.54m

Width: 19.99m

Area over cladding: 301.47m²

Area over framing: 301.47m²



The overall size of the home (m2) is indicative only as the exterior cladding detail selected may alter the final dimensions.