



New TAUPO SHOWHOME



To find out more, talk to your local Generation Homes Sales Consultant:
 Ian Connon | **027 488 4800** | ian.connon@generation.co.nz
 Visit our Show Home at 2 Saddleback Drive, Richmond Terrace, Taupō
 Visit us online: www.generation.co.nz

**2 SADDLEBACK DRIVE
RICHMOND TERRACE**

221m² 4 2 2 2

Nestled near the sparkling shores of Lake Taupō, Richmond Terrace offers an idyllic setting in the heart of Aotearoa's North Island. Surrounded by natural beauty and close to a vibrant local community, it's where convenience meets tranquility.



MAKING BUILDING *easy* www.generation.co.nz

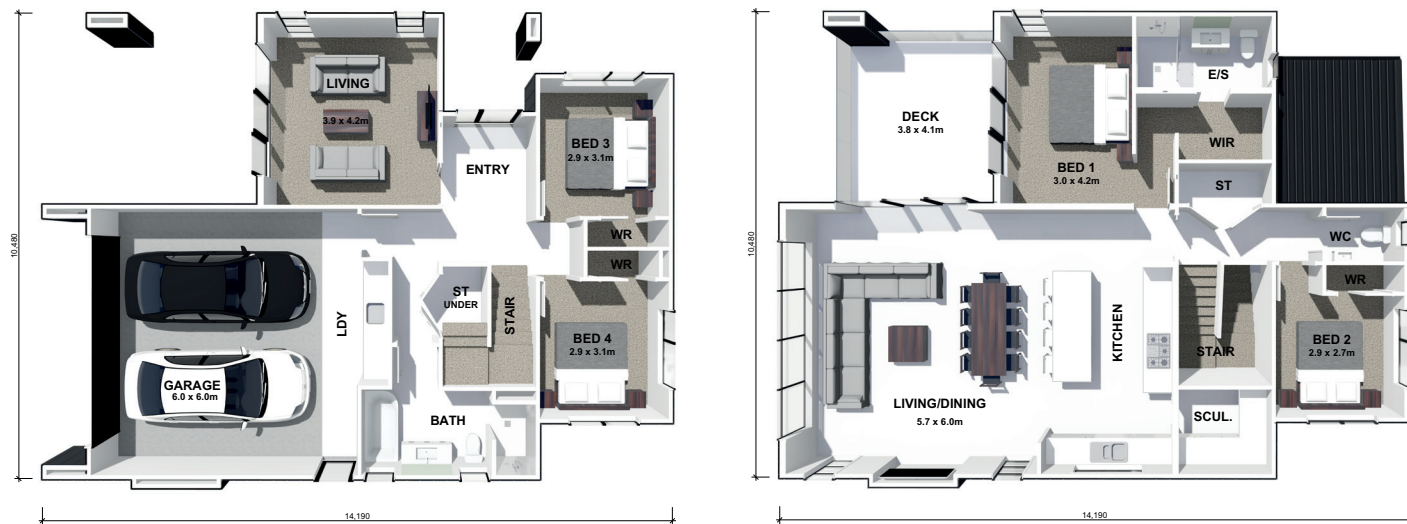


MAKING BUILDING *easy* www.generation.co.nz

Te Wai

Two-level luxury with superb indoor-outdoor living.

229.4m² 4 2 2.5 2



HOME DIMENSIONS

Length: 14.19m

Width: 10.45m

Ground floor area over framing: 110.09m²

First floor area over framing: 111.64m²

Total area over framing: 221.73m²

DESIGN FEATURES

- Two-storey modern design
- Four bedrooms with ensuite and walk-in wardrobe to master bedroom
- Upstairs open plan kitchen, dining and living leading onto covered deck
- Kitchen with breakfast bar and scullery
- Downstairs formal living area with indoor/outdoor flow
- Double garage with internal access and laundry

STANDARD FEATURES WITH SHOW HOME UPGRADES

2 SADDLEBACK DRIVE, RICHMOND TERRACE, TAUPŌ

EXTERIOR

- Roof - Long-Run Styleline (square), Ebony (Black) gutter, fascia & downpipes - Colorsteel, Ebony (Black)
- Window joinery - Black AeonoX powder coating with grey tint low-e glass
- Entry door - 1 PTFX, aluminium with vision window, Black
- Entry door hardware - Schlage Boston handle in Chrome
- Exterior cladding - James Hardie: Stria 405mm width, fixed vertically, painted Resene Quarter Rice Cake
- Exterior cladding - James Hardie Linea Oblique 200mm, fixed horizontally, painted Resene Element
- Soffits - painted Resene Element
- Foundation - painted Resene Element
- Garage Ink garage door - flat smooth, Ebony
- Paving, decking, landscaping & lawns by Maze Landscaping Ltd
- Natural cut stone steppers, medium and large
- Steps - coloured sleeper risers and edge with paver treads
- Concrete (exposed aggregate) vehicle crossing and driveway

INTERIOR

- Ceiling height 2.765 (2.4m is standard), painted Resene Alabaster
- Monopitch ceiling to kitchen, dining and living
- Plaster - level 4 paint finish, square stopped with square corners
- Wall colours:
 - Bathroom & ensuite - Resene Battleship Grey
 - Rest of the home - Resene White Pointer Half
- TV feature boxed shelves - Melteca Oiled Legno Puregrain finish
- Sonik Acoustic Slat wall panels - Black Oak
- Doors - Isle U Groove (two pot lacquer) painted Resene Alabaster
- Barn door by Visual Hardware, 2270x1000x40 Hardwood Chevron, stained to match flooring with Black Modern front mount hardware
- Door handles - Miles Nelson, Skyler with roundplates in Black, with black hinges
- Wardrobe sliders with white track & trim by Designer Homeware, 1 door painted to match other interior doors, Resene Alabaster
- Wardrobe & storage shelving by Designer Homeware - upgrade combinations of Pacific & Kiwi ranges
- Study nook by Designer Homeware

FLOORING & TILES

Flooring First Taupo:

- Carpet - Jacobsen Andes Peak - Patilla
- Underlay - 11mm (upgraded)
- Garage carpet - Anthracite (recommended colour)
- Vinyl planking: Dalesford, Antique Oak

The Tile Depot Rotorua:

- Terramix, Avorio 600x600 (ensuite and bathroom)
- Botanica Tropical 600x1200mm (ensuite and bathroom)
- Casablanca White 58x242 (kitchen, laundry and WC splashback)
- All with colour matched grout

KITCHEN & LAUNDRY

Kitchen cabinetry and design by HK Kitchens:

KITCHEN

- Cupboards - Melteca Chalk White stain finish
- Accent colour, boxed ends and floating shelves - Melteca Oiled Legno puregrain finish

Benchtops:

- Island & cooktop - Archant Florim, Marble Eternal Gold
- Pantry - Melamine white

- Sink - Franke Spark SKX651 (1¼ with draining tray)
- Handles - Archant Edge Straight White 200mm
- Kitchen tap - Methven Shadow, gooseneck with vege sprayer

LAUNDRY

- Cupboards - Melteca Chalk White satin finish
- Benchtops - Laminex Formica Oiled Legno, natural finish
- Sink - Archant Dallas 400-10 with tap bay
- Handles - Archant Edge Straight, White 200mm
- Laundry tap - Methven Shadow, gooseneck

APPLIANCES

- Freestanding oven - F&P 90cm gas freestanding oven stainless steel OR90SCG2X1
- Rangehood - Vissari 90cm undermount, VSPP900S
- Dishwasher - F&P 60cm standard dishwasher stainless steel DW60FC1X2
- Waste disposal - F&P GD752IA1

VANITIES

Vanities supplied by Mico:

- Plumblin Prava 2-drawer wall-hung vanity in White 900mm (downstairs bathroom and ensuite) PRM90XW2C.WV
- WC - Plumblin Prava 500mm 1-door wall-hung vanity in White PRM50.S1C.WV

PLUMBING FIXTURES

- Tapware is Methven Shadow Range
- Showers are tiled with glass doors supplied by The Showerman. Ensuite is sliding door and downstairs bathroom is tiled wall only.
- Toilet - Caroma Stylus Origina Rimless back to wall suite OR001 (833432)
- Bath - Plumblin Tondo, 1700mm, left corner back to wall TON1700L

Mirrors by Bathco:

- Bathroom & ensuite - Bathco LED mirror 900mm round MLO9090
- WC - standard flat mirror 400mm
- Goldair heated towel rails

HEATING & HOT WATER

- Mitsubishi High Wall Heatpumps - downstairs units installed as a multi-system and connected to a single Mitsubishi MXZ-AF80VGD
- Rinnai Infinity 26L

Features are subject to change, providing the goods used are of equal or better quality as those listed here. Some features may vary between regions. Information correct as of September 2025.