

Fixed Price. On time. Guaranteed.



ARTISTIC IMPRESSION - PLEASE CONTACT GENERATION HOMES FOR MORE INFORMATION

LIVE HERE

Lot 9 Copper Ridge 3 Bed home Family Home

\$595,000

Designed to capture the sun with lovely indoor – outdoor flow. This fantastic 3 bedroom home is available in the new Copper Ridge development in Halswell.

OUR DESIGN FEATURES:

Open plan kitchen, dining and living
3 bedrooms

Two bathrooms and separate WC
Master bedroom with ensuite and WIR

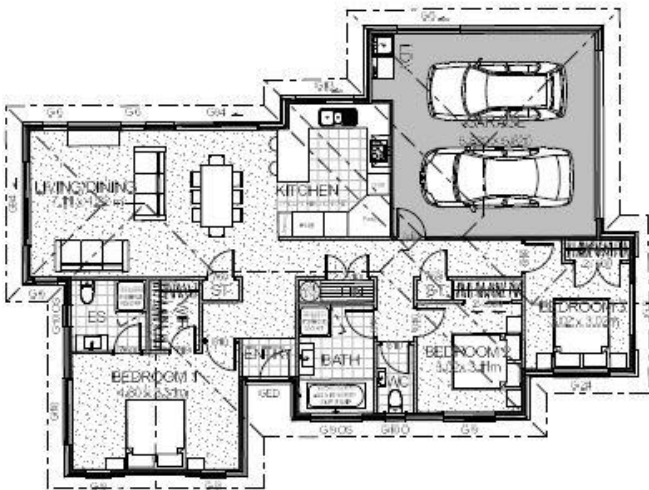
Modern large kitchen with appliances
Double garage

Brick cladding with gables and secondary feature linear cladding
Hard landscaping package including driveway, patios, boundary fencing, letterbox and clothesline

Soft landscaping including lawns and gardens included.

Heat pump

LED lights throughout



167m² 3 2 2 1

Lot size: 585m²



MAKING BUILDING *easy*
www.generation.co.nz

For more information call
Lindy Hayes-Thompson (027) 889 3773